

Nursing Now

CHALLENGE




Nursing Now/ Nightingale Challenge, University of Ghana

The Nursing Now Challenge

June 2021 marked a new beginning with the launch of the "[Nursing Now Challenge](#)", under the continued leadership of Professor Lisa Bayliss-Pratt at Coventry University, in partnership with The Burdett Trust for Nursing.

"As a leading provider of nursing education in the UK we are very proud to work with organisations including Health Education England (HEE), the Tropical Health and Education Trust (THET) and Jhpiego to implement the Nursing Now Challenge.

We hope that the Nursing Now Challenge will have a significant impact, particularly in low and middle-income countries, supporting the development of the global health workforce, strengthening health systems and improving the health of people around the world."

Professor Lisa Bayliss-Pratt, Pro-Vice-Chancellor at Coventry University & Nursing Now Challenge Programme Director.

Investing in nurses and midwives is essential for improving health and healthcare globally.

The Nursing Now Challenge offers you an opportunity to be part of a global movement to support nurses and midwives as leaders, practitioners, and advocates in health.

The purpose of the Nursing Now Challenge

The purpose of the Nursing Now Challenge is to support nurses and midwives in their roles as leaders, practitioners, and advocates in health, and to demonstrate that nursing and midwifery are exciting and rewarding careers in order to contribute towards recruitment and retention on a global scale.

This is an opportunity for all participating organisations to be part of a great global movement to develop nursing and midwifery. It will enable them to maintain and enhance their reputation, externally and with their own staff and students, for investing and championing nursing and midwifery.

As the world continues to struggle under the weight of the COVID-19 pandemic, one thing is clear - investing in the nursing and midwifery workforce and improving recruitment and retention is vital to protect health globally.

WHO estimates that the world will need an additional 9 million nurses and midwives by the year 2030.

How does it work?

All employers of nurses and midwives are encouraged to take part. Each employer is asked to provide a leadership and development programme for their nurses and midwives. The Nursing Now Challenge is also open to nursing and midwifery students and we urge universities and colleges to provide leadership development training to supplement their curricula.

Your programmes can be any mix of formal courses, mentoring, shadowing or learning from other professionals or sectors. You decide the content and format so that they are relevant to your own workforce and local needs.

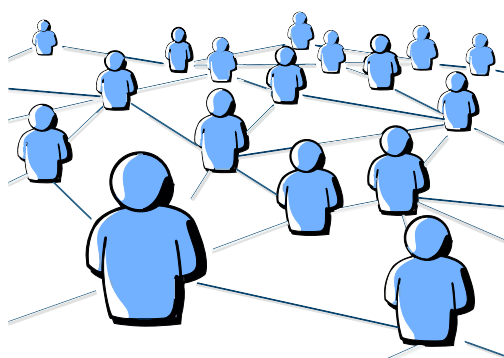


Credit: Tim Bekir for THET

The Nursing Now Challenge offers you...

BEST PRACTICE & EXPERIENCE SHARING

- As a participant of the Nursing Now Challenge, you will have access to social platforms that will allow you to connect with others around the world. This will enable ideas and learning to be shared, as well as collaborative events and the creation of networks that can be used for mutual support and to strengthen the voice of nurses and midwives regionally and globally.



A GROWING GLOBAL MOVEMENT

- This is an opportunity for all participating organisations to be part of a great global movement to develop nursing and midwifery, strengthen health systems globally and contribute towards improving recruitment and retention.

GUIDANCE & RESOURCES



- The Nursing Now Challenge provides guidance on programmes, research evidence and good practice. We will also supplement your local programmes with optional global content, such as regular webinars with internationally recognised nursing and midwifery leaders.
- For employers, universities and/or colleges in low and lower middle income countries that cannot fund programmes locally, the Nursing Now Challenge will work with you to find the resources needed.

A PLATFORM TO SHOWCASE LEADERSHIP SKILLS, INNOVATIVE IDEAS & ENTREPRENEURIALISM

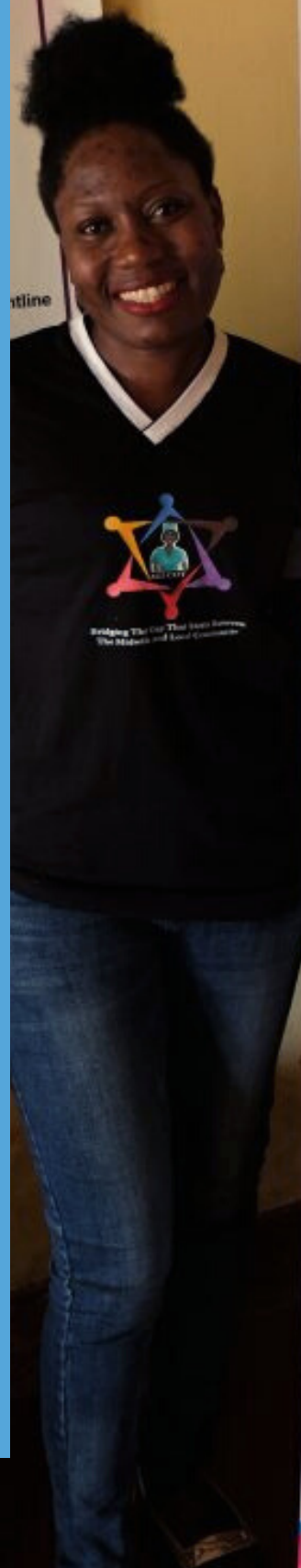
- The Global Solutions Initiative gives nurses and midwives the opportunity to take part in global challenges which give your staff/ students the opportunity to showcase their entrepreneurialism, innovative thinking and leadership skills.

How is the Nursing Now Challenge different from the Nightingale Challenge?

- The Nursing Now Challenge is open to all age groups
- Both health employers and universities/ colleges can accept The Nursing Now Challenge
- The Nursing Now Challenge aims to reach 100,000 nurses and midwives by 2022
- The Tropical Health and Education Trust, Health Education England & Jhpiego are strategic partners of the Nursing Now Challenge
- The Nursing Now Challenge offers participants a suite of online resources to support their leadership development journey and facilitate cross country peer to peer learning
- The Nursing Now Challenge will launch a midwifery-specific workstream in 2022

Visit our website to find out more and accept the Nursing Now Challenge, or write to us at:

challenge@nursingnow.global



Project

Creating an enabling environment for girls, adolescent girls, and young women to access friendly health services in marginalised communities. Division.

General Objective

To reach out to marginalised communities, adolescents and young women in Nansana Community, providing them with information, Life Skills, and Counselling.

Funded by

Year: 2020

Location: Nansana
P.O. Box 1000
Tel: 011 234 5678

Frequently Asked Questions

- **How do I accept the Nursing Now Challenge?**

[Click here](#) to accept the Nursing Now Challenge on our website

- **Do I need to accept the Nursing Now Challenge if I am already implementing a Nightingale Challenge programme?**

If you plan to enrol another cohort of nurses and/ or midwives and continue your journey with the Nursing Now Challenge please do fill in our online form and accept the Nursing Now Challenge. [Click here.](#)

- **Can other professions other than nurses and midwives join the challenge?**

The focus of the Nursing Now Challenge is on nurses and midwives. However, other health professionals are welcome to take part in your Nursing Now Challenge training, although they will not count towards the 100,000 target.

- **I'm a nurse/student, can I enrol myself in the Nursing Now Challenge?**

No, to take part in a Nursing Now Challenge leadership development course, your employer/ university/ college will need to accept the Nursing Now Challenge and invite you to participate. However, there are plenty of leadership development resources on the Nursing Now Challenge website, as well as regular expert-led webinars that you are welcome to use and attend regardless of whether you are taking part in a Nursing Now Challenge programme. There are also opportunities to take part in global challenges which are open to nurses and midwives who are not taking part in a Nursing Now Challenge programme.

- **We're an organisation that does not employ nurses/midwives, how can we still be involved?**

We have plenty of leadership development resources that can be found on our website which may be useful. You can also take part in our expert-led webinars which address many diverse themes and issues. Sign up to our newsletter to receive regular updates and information about upcoming events.

- **How long does the programme of activities have to be?**

There are no formal requirements regarding the length of your Nursing Now Challenge programme.

- **How do we contact other organisations that have accepted the Nursing Now Challenge?**

If you would like to be connected with any other Nursing Now Challenge organisations, please contact challenge@nursingnow.global

You can also join our Facebook groups (Youth, Global Solutions, Partnerships) to connect with other organisations and Nursing Now Challenge participants.

- **What reporting do you require us to do?**

We ask that you share regular updates about the progress of your Nursing Now Challenge programme. If you would like your programme to feature on the Nursing Now Challenge website please contact: challenge@nursingnow.global